

# PRODUCT LITRATURE

## 1. SOLARTECH POWER PLANT

Solar PV Power Plant is a large scale Solar PV System designed for the supply of Electricity for own use or for supply to the grid. Various types & capacity of Solar Power Plants are designed, manufactured & installed as per customer's requirements varying from 1KW to MW scale. The space required to install a Solar Power Plant is 100 Sq. Ft. / KW. As per govt. policy which gets ammended from time to time, one can get 1 KW to 1000 KW Solar Power Plant installed on its roof and in megawatt capacity on ground.

### Applications of Solar Power Plant

- Cold Storage, Food Processing
- Industry, Telecom & Public Services
- Security & Protection System & Devices
- Electricity Production Power Generation
- Agriculture and Horticulture for Water Pumping
- Free Times : For Charging Boats & Camper Battery
- Health : For Refrigeration / Conservation of Vaccines & Blood
- Residential Power Backup for Home Lighting, Home Appliances, etc.



Grid Interactive Solar Power Plant installed at Punjab Police Station site  
inset view of Control Room

### Types of Solar PV Power Plants :

1. Off-Grid & Grid Interactive Solar Power Plant
2. On Grid Rooftop Solar Power Plant
3. On Grid Hybrid Solar Power Plants with battery backup
4. Ground Mounted On Grid Solar Power Plant

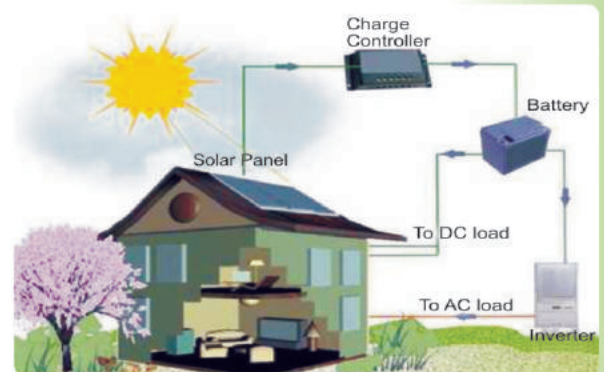
**Government Policies :** Various State Govt., Central Govt. Deptts., State Discoms, Ministries like Railway, Defence etc have issued their NRSE Policies and Solar Energy Programme based on MNRE, Govt. of India Guidelines, which one should refer to take maximum benefits. Presently Net Metering Scheme is being implemented as per the guidelines of DISCOMS of various states.

Individual households, industries, offices, commercial establishments, institutions, residential complexes etc. will be eligible with project capacity from minimum 1 KW upto 1000 KW with/ without battery back-up support. Consumers can generate solar power for self consumption and/or can feed excess power into the grid.

In Punjab the maximum capacity of the Roof Top Solar PV system can not be more than 80% of the Sanctioned/Connected Load with minimum capacity of 1 KWp. All the equipment to be installed shall be as per specified Indian/IEC standards and as per PSPCL/ Govt. Policy being issued from time to time.

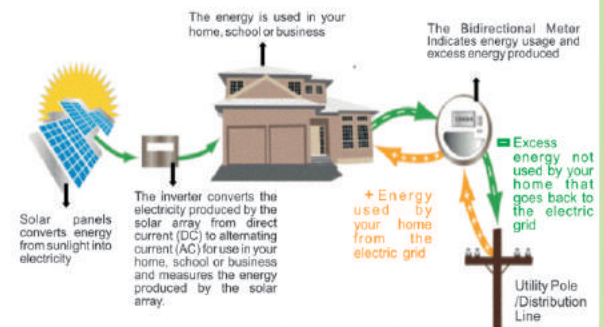
**Govt of Haryana** has made it mandatory to install Solar Power Plant 5% of connected load upto 1000 KWp for all consumers on plot size of 500 square yards. The order will be applicable to private bungalows, group housing societies, builder apartments, malls, offices, commercial complexes, schools, hospitals any building, new or old, that meets the plot size criteria, subject to change in Govt. Policy.

**Other State Govts.** have also issued their NRSE policies which can be seen on MNRE website or respective state's sites.



Off Grid Solar Power Plant

### Net Metering Solar Power System



On Grid Solar Power Plant



Ground Mounted on Grid SPV Power Plant